

19 " Network Standing Cabinets

Load Capacity: 800-1000kg

Standards and Compliances:



ISO9001:2015
Quality Management System



CE conform to EN61000-3-2
Information Technology Equipment, Safety,
ENIEC61000-4-11 Audio/Video, Information
and Communication Technology Equipment
Part 1: Safety requirements

Standard:
Comply with ANSI/EIARS-310-D,
IEC297-2、DIN41494;PART1;
DIN41494;PART7

Material:
SPCC Cold Rolled Steel;

19" rails: 2.0mm, others: 1.2mm
Loading capacity: Static loading: 800-1000KG

**We have other sizes available,
please consult our sales personnel for details.**

Standard Colors:

RAL 9005 Black



Product Model: 18U, 22U, 27U,
32U, 36U, 42U

42U



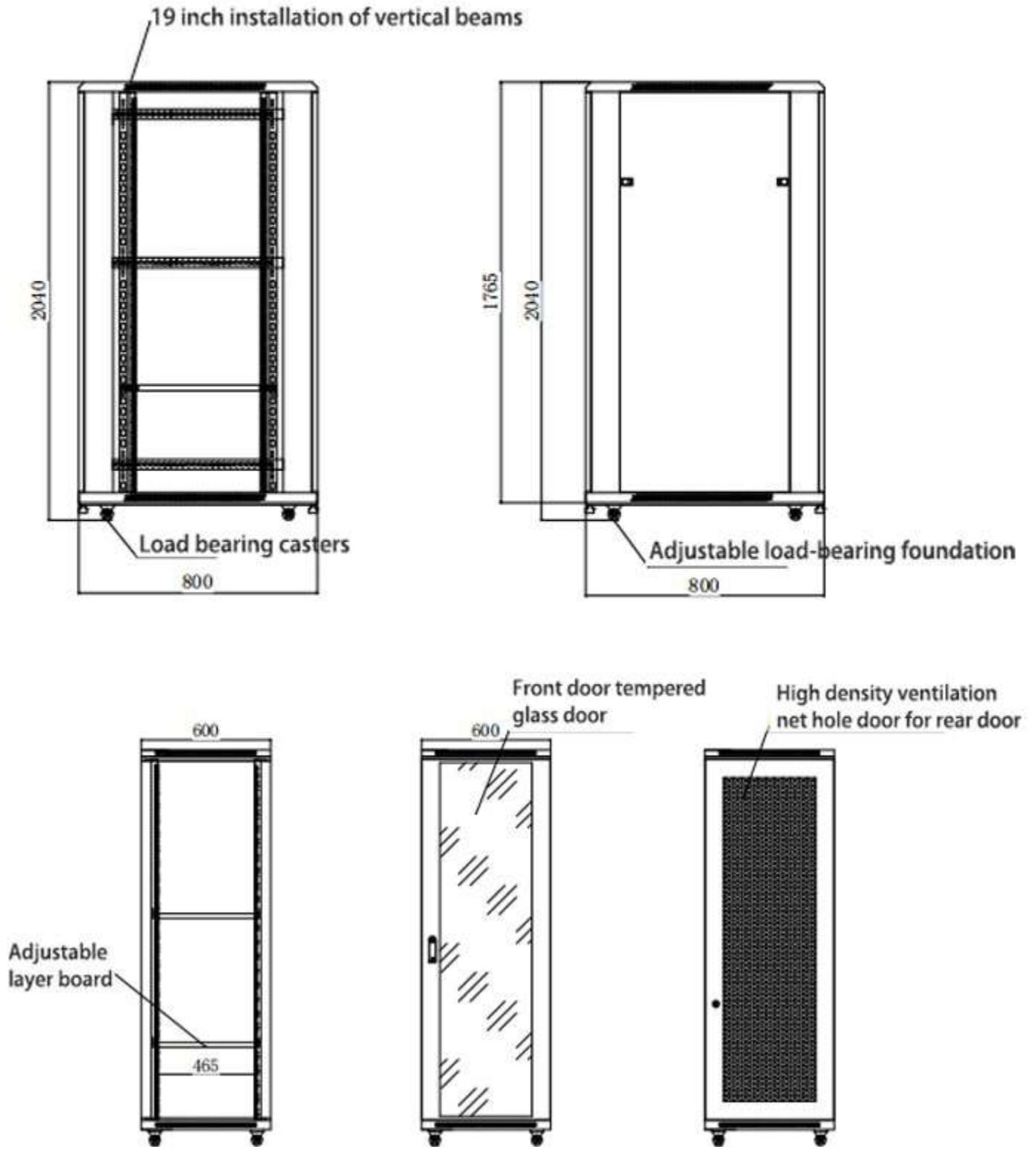
W600*D800*H2000



19 " Network Standing Cabinets



Construction Drawing

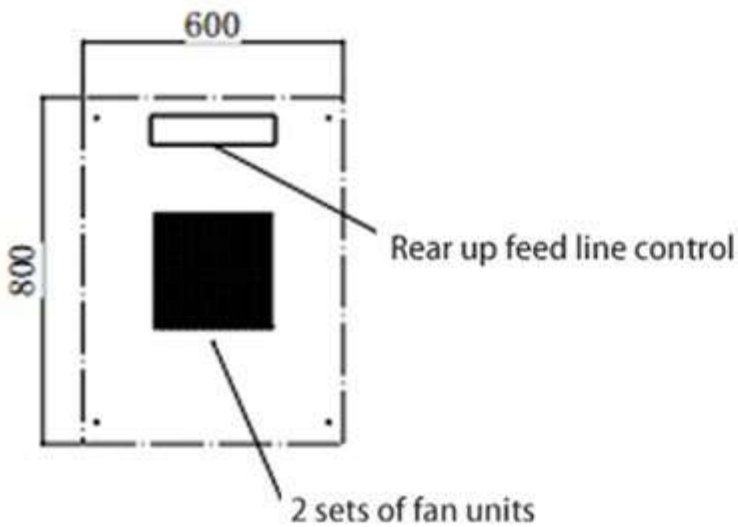


19 " Network Standing Cabinets

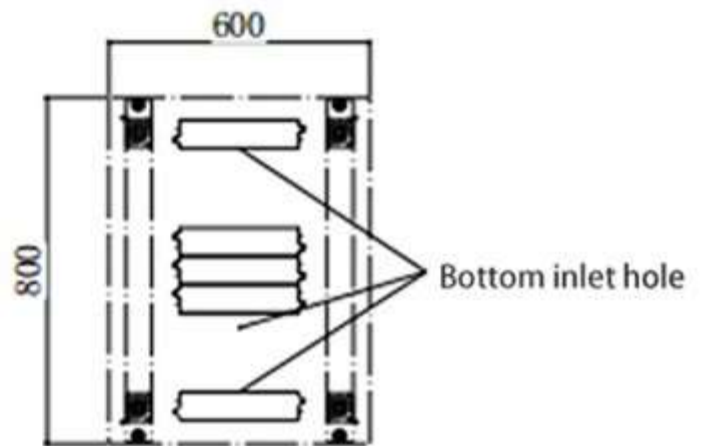


Construction Drawing

vertical view



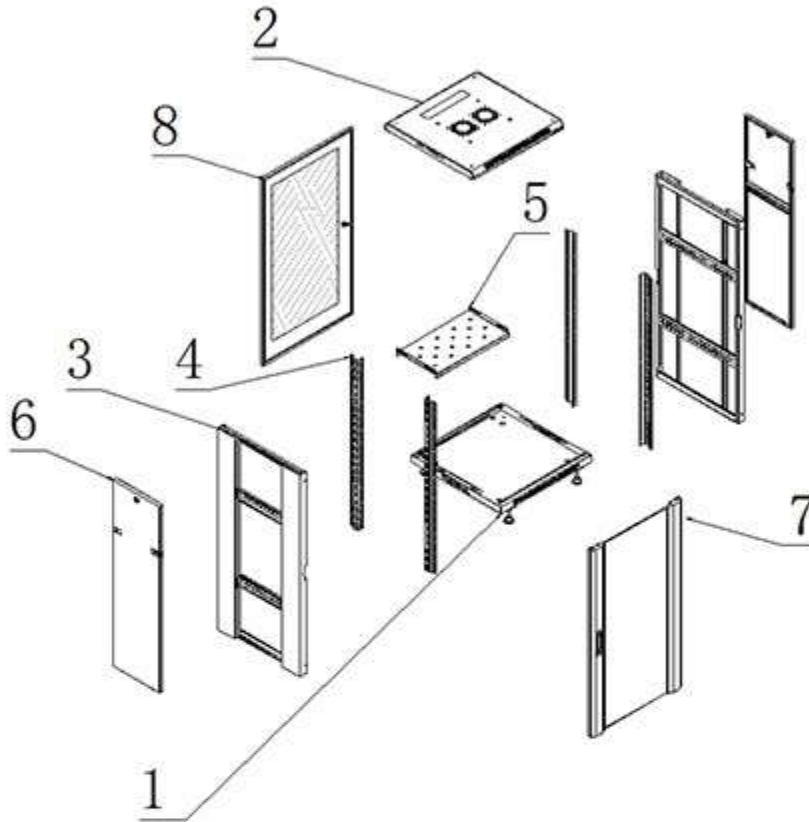
Below image



Feature:

- Completely glass front door, convenient and flexible.
- The overall welding structure, firm structure, static load bearing of up to 800-1000 kg,
- The top and bottom can be closed knock off type 2 place walk line channel

19 " Network Standing Cabinets



Product Description	Size W*D*Hmm	h Size in U	Width Overall mm	Width Rail to Rear Door	Depth Overall mm	QTY IN PACKAGE	PACKING DIMENSIONS	Gross Weight of Product kgs
18U 19"Wall Mounting Cabinet W=600 mm D=600/800/1000 mm	600*600*1000 600*800*1000 600*1000*1000	18U	600	19"	600/800/1000	1	0.19	48
22U 19"Wall Mounting Cabinet W=600 mm D=600/800/1000 mm	600*600*1200 600*800*1200 600*1000*1200	22U	600	19"	600/800/1000	1	0.19	51
27U 19"Wall Mounting Cabinet W=600 mm D=600/800/1000 mm	600*600*1400 600*800*1400 600*1000*1400	27U	600	19"	600/800/1000	1	0.22	54
32U 19"Wall Mounting Cabinet W=600 mm D=600/800/1000 mm	600*600*1600 600*800*1600 600*1000*1600	32U	600	19"	600/800/1000	1	0.29	58
36U 19"Wall Mounting Cabinet W=600 mm D=600/800/1000 mm	600*600*1800 600*800*1800 600*1000*1800	36U	600	19"	600/800/1000	1	0.26	61
42U 19"Wall Mounting Cabinet W=600 mm D=600/800/1000 mm	600*600*2000 600*800*2000 600*1000*2000	42U	600	19"	600/800/1000	1	0.28	66

*The packaging size changes with the size of the cabinet